

*new* Work.

PREMIUM RUBBER FLOORING

colorspec®  
PREMIUM RUBBER TILE



860 straw, 862 canyon

Choices in color, design and texture engineered for superior performance  
ColorSpec offers a wide array of colors and designs for inspired creativity. With a 10-Year Wear Warranty, Mannington Premium Rubber Flooring offers the ultimate in durability, cleanability and slip-resistance.

**MANNINGTON**  
COMMERCIAL

**COLORSPEC**

**PRODUCT ATTRIBUTES**

- Thermoset rubber tile
- Available in 18 1/8" x 18 1/8" tiles
- 3/8" thickness
- ASTM F-1344, Class 1-B
- Meets guidelines established by ADA for walking surfaces and ramps
- Made in USA

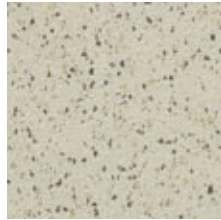
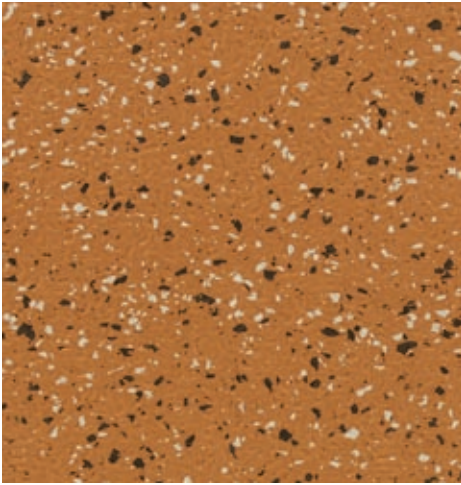
**PERFORMANCE ATTRIBUTES**

- Superior rubber formulation
  - Superior indentation resistance
  - Superior color retention
  - Superior slip-resistance
  - Superior scratch-resistance due to low clay and high pigment content
  - Quieter underfoot
- Built-in long lasting migrating wax
  - No wax required, low maintenance option
  - Self waxing feature for superior appearance retention
  - Lower life cycle costs
- Superior profile design
  - Profile design allows for enhanced cleanability
- Superior warranties
  - Limited 10-Year Wear Warranty
  - Limited 10-Year Commercial Warranty

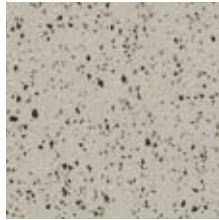
**ENVIRONMENTAL ATTRIBUTES**

- No wax required, eliminating the need for harsh cleaning agents, strippers and polishes due to its cleanability and durability
- Certified under FloorScore – an independent 3rd party IAQ verification system for low emitting flooring. Approved as CHPS 01350 compliant and recognized in LEED IEQ Credit 4.3
- Adhesive meets VOC content limit of SCAQMD Rule 1168 which may contribute to LEED IEQ Credit 4.1
- Vinyl alternative product
- Manufactured in San Jose, CA and may contribute to LEED MR Credits
- Made in the USA

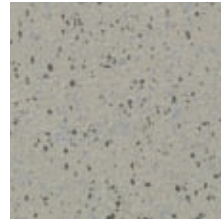
**COLORSPEC** available in square and sculptured profiles



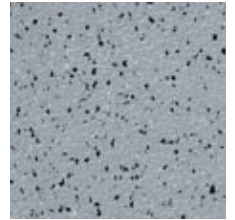
873 sanguaro



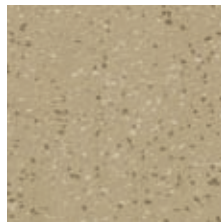
869 sand dollar



874 fog



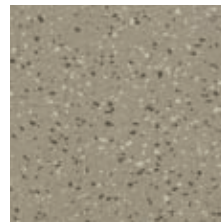
876 ice field



860 straw



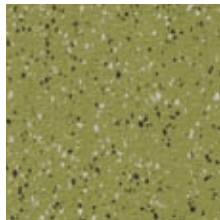
868 sundew



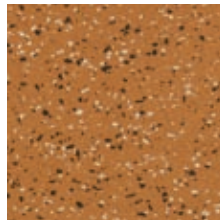
861 thatch



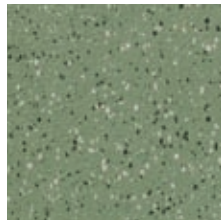
863 ginger field



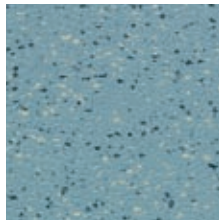
866 sedum



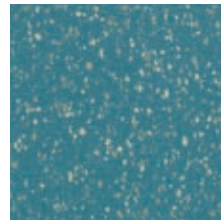
864 nectar



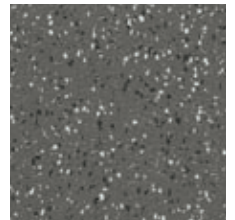
867 agave



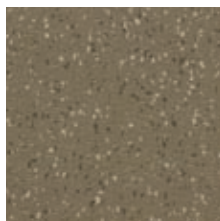
877 waterfall



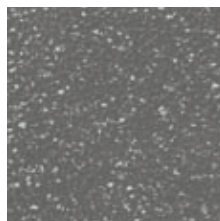
878 lagoon



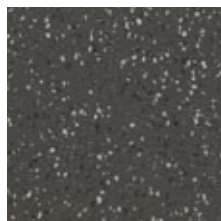
984 shadow gray



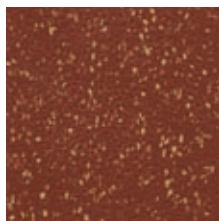
862 canyon



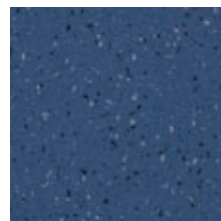
875 flint



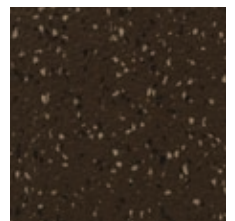
971 storm



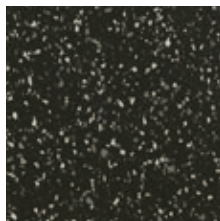
865 jasper



879 alpine glow



870 java

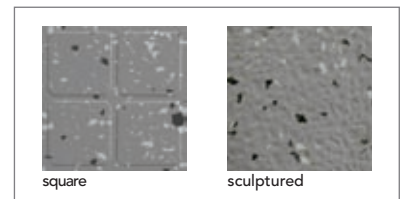


872 midnight moon



871 terra preta

Coordinating stair treads available on made to order basis.



**Choices that Work.**

800 241 2262 [manningtoncommercial.com](http://manningtoncommercial.com)

Printed on recycled paper. Please help us close the loop by recycling this brochure or by sharing it with another individual.

801499

**MANNINGTON**  
COMMERCIAL