

new Work.



Contemporary design principles.

Form and function combine to create a dynamic collection of curvilinear and geometric patterns.

MANNINGTON  
COMMERCIAL

## GOOD FORM COLLECTION

### PERFORMANCE ATTRIBUTES

- 100% Mannington Quantum Nylon™ - Performance nylon resists crushing, matting, abrasion, and wear in demanding commercial environments.
- SafeGuard SR™ - Commercial stain resistant treatment safeguards against spills and stains. Backed by Mannington's 10 Year SafeGuard SR™ warranty.
- Available in 24" x 24" modular

### ENVIRONMENTAL ATTRIBUTES

- Infinity® Modular contains pre-consumer recycled content
- Certified NSF/ANSI-140 Gold
- Meets CRI Green Label Plus
- Adhesive meets VOC content limit of SCAQMD Rule #1168
- ISO 14001 registered manufacturing facility
- Contributes to LEED Credits
- Carpet can be reclaimed through Mannington's LOOP® Carpet Reclamation Program

### INFINITY® MODULAR

- Certified NSF/ANSI-140 Gold
- Contains pre-consumer recycled content
- Impermeable moisture barrier
- Eliminates wick-back staining
- Superior tuft bind wet/dry
- Superior dimensional stability
- Passes British Spill and Moisture Impact Tests
- 24" x 24" modular carpet tile
- Limited Lifetime Wear and Backing Warranty

### TAKING SHAPE NOW



vanilla (51091)



storm (14092)



green apple (43093)



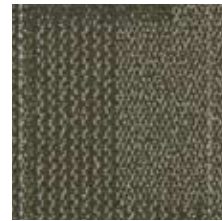
strawberry (73094)



tangerine (63095)



eggplant (24096)



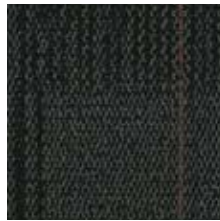
herb (44097)



chai latte (83098)



graham cracker (82099)



oreo pie (15100)



espresso (84101)



tapioca pudding (42102)



fudge brownie (85103)



watermelon rind (45104)



blueberry (15105)



tin (14106)



cookies n cream (14107)

## Choices that Work.

800 241 2262 [manningtoncommercial.com](http://manningtoncommercial.com)

Printed on recycled paper. Please help us close the loop by recycling this brochure or by sharing it with another individual.

**MANNINGTON**  
COMMERCIAL